



**QCYC Club Racing**  
**Wednesday Night SI SUPPLEMENT**  
**Version V01.03 2020-08-16**  
**With Amendment 03**

**Amendments**

#	DATE	SECTION	CHANGE
1	2020-08-09	6	Fixed typo
2	2020-08-10	5	Added first warning
3	2020-08-16	Additional Courses	Updated courses to <ul style="list-style-type: none"><li>• Remove waypoints in the Inner Harbour</li><li>• Added T13 to courses E, F &amp; G</li></ul>

**Wondering how to practice  
#PhysicalDistancing  
on your pleasure craft?**

Try to maintain the space of approximately  
4 lifejackets between you and people  
on shore or in other boats.

**STAY HOME, SAVE LIVES**

Government of Canada / Gouvernement du Canada

Canada



Ontario Sailing

1 h · 🌐



🚤 If you are racing - We recommend that you sail with people in your bubble! 🚤

If you don't sail with people in your bubble, we recommend that you wear a buff or face mask/covering while on the water!

[#safesailing](#)

[#ontariosailing](#)



## General Information

(This general information does not rank as rules, if needed as a rule, it is explicitly included in the NOR, itself or SIs)

The part of the regulation that allows team sports is included in the section covering "Facilities for sports and recreational fitness activities". This means it needs to address over 100 sports as well as "... and recreational fitness activities, including gymnasiums, yoga and dance studios and other fitness facilities ...". This requires that the wording and structure can not be tailored to reflect the terminology and practices of sailboat racing. This means we all need to forebear in this extraordinary situation and strive to meet both the letter and spirit of the law that is intended to protect individuals and society from the pandemic.

- Because of COVID-19 regulations, there is a cap of 96 racers, persons, in a race. Each soul on board a racing sailboat counts toward the 96. This will be handled on a first come basis (Is a rule in the NOR)
- There are no combined, series or overall winners, awards or trophies
- Racers must comply with QCYC COVID-19 Protocols, especially related to crew that aren't members of the Club.
- As the situation is extremely fluid, including last minute cancellation of COVID-19 issues, please check the online Notice Board right up to the start

As sailboat racing is a team sport and as such the requirement for physical/social distancing of two meters of individuals and other sailboats can be waived for short periods of time. Consistent and persistent close contact within two meters needs to be avoided.

The number of crew, including skipper/person in charge, is limited to the number that can distance themselves from each other by two meters.

The owner or person in charge needs to ensure that their sailboat and her equipment is "cleaned and disinfected between each use or, where used in a game or practice, at the end of play, such as at the completion of a game or practice"



# QCYC Wednesday Supplement SIs

## 1 RULES

World Sailing RRS Appendix WP Rules for Racing Around Waypoints applies, see

[https://www.sailing.org/tools/documents/AppendixWPRulesforRacingAroundWaypoints-\[19996\].pdf](https://www.sailing.org/tools/documents/AppendixWPRulesforRacingAroundWaypoints-[19996].pdf). Appendix WP will be attached to Sailing Instruction Supplement.

Use of Appendix WP requires that all sailboats carry a GNSS receiver capable of using the Chart Datum WGS 84 and capability to help navigate to an inputted waypoint.

For more details on using waypoints, see World Sailing's *Guidance on Racing Around Waypoints* at

[https://www.sailing.org/tools/documents/GuidanceonRacingAroundWaypoints-\[19997\].pdf](https://www.sailing.org/tools/documents/GuidanceonRacingAroundWaypoints-[19997].pdf)

## 4 SIGNALS MADE ASHORE

4.1 The Official Flagpole is on the bow of the Rapids Queen.

## 5 SCHEDULE OF RACES

Race 1 - Wed., August 12 <sup>th</sup>	Race 5 - Wed., September 09 <sup>th</sup>
Race 2 - Wed., August 19 <sup>th</sup>	Race 6 - Wed., September 16 <sup>th</sup>
Race 3 - Wed., August 26 <sup>th</sup>	Race 7 - Wed., September 23 <sup>rd</sup>
Race 4 - Wed., September 02 <sup>nd</sup>	

First warning for races 1 to 5 is 18:10 and races 6,7 is 17:40.

## 6 CLASSES

CLASS	MEMBERS	SCORING METHOD	CLASS FLAG	BACK STAY FLAG
Portsmouth	Star Class, Soling Class	Portsmouth	NA	NA
PHRF NFS 1	160* & under	PHRF-LO NFS	NA	NA
PHRF NFS 2	161* to 185* inclusive	PHRF-LO NFS	NA	NA
PHRF NFS 3	186* to 210* inclusive	PHRF-LO NFS	NA	NA
PHRF NFS 4	211 & over			

\* After subtraction of the 30 second per mile penalty for not having a current valid PHRF-LO certificate

## 8 MARKS

See *ADDITIONAL COURSES: QCYC Wednesday Courses* below

## 10 AREAS THAT ARE OBSTRUCTIONS

All commercial vessels, non-pleasure craft under the Canada Shipping Act, no matter their size have the right of way, notwithstanding which vessel is the give way vessel and are obstructions.

## 11 THE START

Races will be started as follows:

Minutes before Starting Signal	Visual Signal	Sound Signal	Means
5	None	One	Warning signal
4	None	One	Preparatory signal
1	None	One Long	One minute
0	None	One	Starting signal

- The Race Committee will confirm the Classes whose warning will be signal next within the minute before their warning signal by radio announcements
- There will be at least one minute between the starting signal and the next warning signal
- Times shall be taken from the **sound signals**.
- The Race Committee will endeavour to also provide radio announcements. Failure to do so will not be grounds for appeal.

This changes RRS 26.

The intended starting order is:

START	CLASSES
1	PHRF NFS 1
2	PHRF NFS 2, Portsmouth
3	PHRF NFS 3, PHRF NFS 4

## 15 TIME LIMITS

- Finishing Window – 30 minutes for sailboats within a class
- Curfew – Sunset or 2000, whichever is earlier. Sailboats failing to finish before curfew shall be scored Did Not Finish without a hearing. This changes RRS 35, A4 and A5

## ADDITIONAL COURSES: QCYC Wednesday Courses

The course to sailed is designated by the Code Flag flown from the Official Flagpole by the first warning.

### Course Flag “D” (Delta)

Start	To	Mark, dropped	Rounded to port	Orange inflatable mark dropped south west of Polson Quay & west of the Eastern Gap Channel
	To	Mark EKO-15	Rounded to port	43°37'57.64" N 79°22'44.10" W
	To	Start Line	Pass through the line	
	To	Mark	Rounded to port	Orange inflatable mark dropped south west of Polson Quay & west of the Eastern Gap Channel
	To	Mark EKO-15	Rounded to port	43°37'57.64" N 79°22'44.10" W
Finish	To	Start Line for finish		

### Start/Finish Line

The line between the two yellow inflatable marks set north of the Club House and the path taken by the RCYC tenders

### Course Flag “E” (Echo)

Start	To	T13	Rounded to starboard	43°38'08.42" N 79°21'16.39" W Green, marked "T13"
	To	T31	Rounded to port	043° 36.645' N 079° 21.013' W Lights List #509 [Green, marked "T1".]
		T13	Rounded to port	43°38'08.42" N 79°21'16.39" W Green, marked "T13"
Finish	To	Start Line for finish		

### Start/Finish Line

The line between the two yellow inflatable marks set north of the Club House and the path taken by the RCYC tenders

### **Course Flag “F” (Foxtrot)**

Start	To	T13	Rounded to starboard	43°38'08.42" N 79°21'16.39" W Green, marked "T13"
	To	Waypoint	Rounded to port	043° 36.700' N 079° 21.260' W Appendix WP applies
		T13	Rounded to port	43°38'08.42" N 79°21'16.39" W Green, marked "T13"
Finish	To	Start Line for finish		

### **Start/Finish Line**

The line between the two yellow inflatable marks set north of the Club House and the path taken by the RCYC tenders

### **Course Flag “G” (Golf)**

Start	To	T13	Rounded to starboard	43°38'08.42" N 79°21'16.39" W Green, marked "T13"
	To	Waypoint	Rounded to port	043° 36.700' N 079° 21.260' W Appendix WP applies
		T13	Rounded to port	43°38'08.42" N 79°21'16.39" W Green, marked "T13"
Finish	To	Start Line for finish		

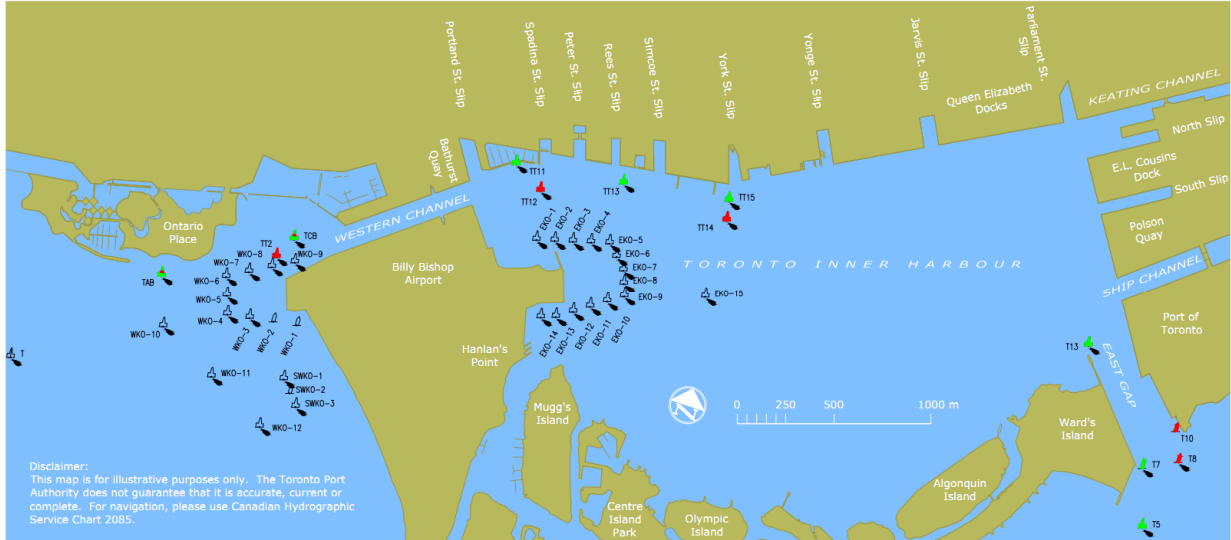
### **Start/Finish Line**

A line between the Orange Flag on the seawall north of the QCYC Club House and western edge of the Westin Harbour Castle complex.

{Editorial Comment}. Racers are reminded that the RCYC tenders and all other commercial, non-pleasure craft, have the right of way at all times. The waters north of the Club’s seawall is shallow. Before the WSR and LCC had the mark in the north-east corner of the Toronto Inner Harbour, the race committee often saw QCYC racers running aground, including sharks and the like.

# Ports Toronto Buoys

[https://www.portstoronto.com/TorontoPortAuthority/media/TPASiteAssets/port/keep\\_out\\_and\\_channel\\_buoys.png](https://www.portstoronto.com/TorontoPortAuthority/media/TPASiteAssets/port/keep_out_and_channel_buoys.png)



## KEEP OUT AND CHANNEL BUOYS



## APPENDIX WP

### RULES FOR RACING AROUND WAYPOINTS

*Use of this appendix is recommended for offshore races when the race committee may wish to specify waypoints instead of physical marks which boats are required to pass to sail the course.*

*Races shall be sailed under The Racing Rules of Sailing as changed by this appendix only if the notice of race and sailing instructions so state.*

#### WP1 CHANGES TO THE DEFINITIONS

**WP1.1** The definition *Start* is changed to:

***Start*** A boat *starts* when, having been entirely on the pre-start side of the starting line at or after her starting signal, and having complied with rule 30.1 if it applies, any part of her hull, crew or equipment crosses the starting line in the direction of the course.

**WP1.2** Add new definition:

***Waypoint*** A position, other than a *mark*, described by latitude and longitude coordinates that the course requires a boat to leave on a specified side.

**WP2** Add new rule 18.5 in Part 2 of the RRS:

#### 18.5 ROOM TO PASS A WAYPOINT

- (a) Rule 18.5 applies between boats when they are required to leave a *waypoint* on the same side and at least one of them is approaching it. However, when rule 20 applies, rule 18.5 does not.
- (b) When *overlapped* boats are approaching a *waypoint* to pass it on the required side, the outside boat shall give the inside boat *room* to pass the *waypoint*, unless the outside boat has been unable to do so from the time the *overlap* began.
- (c) If the inside boat has reasonable doubt that she has *room* to pass the *waypoint*, she may hail the outside boat accordingly. The outside boat shall then give the inside boat additional space unless she is unable to do so.

**WP3** Rule 28 is changed to:

#### 28 SAILING THE COURSE

**28.1** A boat shall *start*, sail the course described in the sailing instructions and *finish*. While doing so, she may leave on either side a *mark* or *waypoint* that does not begin, bound or end the leg she is sailing. After *finishing* she need not cross the finishing line completely.

**28.2** A string representing a boat's track from the time she begins to approach the starting line from its pre-start side to *start* until she *finishes* shall, when drawn taut,

- (a) pass each *mark* or *waypoint* on the required side and in the correct order,
- (b) touch each rounding *mark*, touch a hypothetical object at each rounding *waypoint*, and

- (c) pass between the *marks* or *waypoints* of a gate from the direction of the previous *mark* or *waypoint*.

She may correct any errors to comply with this rule, provided she has not *finished*.

- 28.3** The sailing instructions may specify criteria to determine whether a boat has rounded or passed a *waypoint* on the required side.

#### **WP4 ELECTRONIC POSITION FIXING**

When data from electronic position fixing systems is used to determine the position of a boat for the purpose of verifying compliance with the *rules*, precedence shall be given to data from the boat's primary navigation system.

---

*Note: Approved as an appendix to be placed on the World Sailing website for development of offshore racing with an option to use a Waypoint instead of a Mark. The appendix may be amended with the approval of the Chairman of the World Sailing Racing Rules Committee.*

*Guidance notes for race organizers are available at*  
<http://www.sailing.org/documents/racingrules/experimental-rules.php>